



Student Engagement Strategy 2025-26

Document Title:	Student Engagement Strategy
Version:	2.0
Date Approved:	20th November 2025
Approved By:	Academic Board
Circulation:	Academic Board, Student Engagement & Work Based Learning Committee, Programme Leaders, Academic Staff, Student Representatives, Registry.
Classification:	Public
Review Frequency:	Annual
Next Review Date:	November 2026
External References:	UKSCQA/UKQC

1. Introduction

1.1 Watney College recognises that meaningful student engagement is essential to maintaining academic quality, improving the student learning experience, and ensuring effective institutional governance. Student engagement refers to the active participation of students in shaping their educational experience through representation, feedback mechanisms, partnership working, and participation in institutional decision-making.

1.2 This Student Engagement Strategy establishes a structured framework through which Watney College will ensure that student voice informs academic development, quality assurance processes, programme delivery, and the overall strategic direction of the College.

1.3 The strategy aligns with the College's Business Plan (2026–2031) and governance framework, ensuring that student engagement contributes directly to quality enhancement, widening participation, and the continuous improvement of academic provision.

2. Scope

2.1 This strategy applies to:

- All students enrolled at Watney College
- Academic staff and programme leaders
- Registry and administrative teams
- Student representatives
- Members of institutional committees where student representation exists

2.2 The strategy covers engagement across:

- Programme delivery
- Quality assurance processes
- Work-based learning and placements
- Student representation structures
- Institutional decision-making

3 Strategic Objectives

3.1 Watney College seeks to achieve the following strategic objectives:

- Strengthen the role of student voice in shaping programme delivery and academic development
- Establish effective and representative student participation structures
- Promote partnership working between students and staff
- Ensure inclusive engagement for all student groups, including mature and part-time learners
- Support student participation in quality assurance and enhancement activities
- Improve communication of institutional responses to student feedback
- Strengthen engagement within work-based learning environment

3.2 These objectives support Watney College's commitment to delivering high-quality education and ensuring students are active participants in their learning environment.

4 Governance and Oversight

4.1 Student engagement is embedded within the institutional governance framework.

4.2 Oversight and responsibility are structured as follows:

- 4.2.1 Student Engagement & Work Based Learning Committee: Primary oversight of student engagement strategy implementation, monitoring student feedback, reviewing

student representative reports, and ensuring effective engagement within work-based learning and placements.

- 4.2.2 Academic Board: Receives reports from the Student Engagement & Work Based Learning Committee and ensures that student engagement outcomes inform academic strategy, programme development, and academic quality standards.
- 4.2.3 Quality Assurance Committee: Reviews student feedback outcomes in relation to programme monitoring, student surveys, and quality enhancement initiatives.
- 4.2.4 Programme Committee: Reviews programme-level student feedback, module evaluations, and student representative input related to curriculum delivery.
- 4.2.5 Board of Directors: Receives institutional summaries regarding student engagement outcomes and strategic improvements to the student experience.

5. Student Representation Structure:

5.1 Watney College maintains a structured Student Representative System designed to ensure that student perspectives are represented across institutional processes.

5.2 Key components include:

Course Representatives: Students elected within each programme cohort to represent the views of their peers.

Lead Student Representative: Acts as the primary liaison between student representatives and the College's governance structures.

Student Participation in Committees: Student representatives may participate in selected institutional committees, including:

- Student Engagement & Work Based Learning Committee
- Programme Committees
- Academic Board (where appropriate)

5.3 This structure ensures that student perspectives are integrated into institutional decision-making processes.

6. Key Strategic Themes

The Student Engagement Strategy is structured around three themes.

6.1 Theme 1: Student Voice and Representation

Objective: To strengthen student representation and ensure student feedback contributes meaningfully to academic development and institutional decision-making.

Actions:

- Maintain an effective Student Representative System across all programmes
- Provide structured training for student representatives
- Increase opportunities for students to contribute to academic discussions
- Improve communication channels between student representatives and academic staff
- Establish mechanisms to close the feedback loop by communicating outcomes of student feedback

Key Performance Indicators

- Student representative coverage across all programme cohorts
- Participation levels in student representation training
- Improvement in student satisfaction indicators
- Evidence of actions taken based on student feedback

6.2 Theme 2: Staff Participation in Student Engagement

Objective: To strengthen staff engagement in student voice activities and encourage partnership between students and staff.

Actions

- Provide staff development sessions on effective student engagement practices
- Encourage programme teams to integrate student feedback within programme development
- Promote collaborative problem-solving between staff and student representatives
- Embed student engagement within academic staff responsibilities

Key Performance Indicators

- Participation in staff training related to student engagement
- Evidence of programme-level actions resulting from student feedback
- Student satisfaction with communication and support from staff

6.3 Theme 3: Work Based Learning and Student Engagement

Objective: To ensure students undertaking work placements and professional learning activities are actively engaged in providing feedback and shaping their learning experience.

Actions

- Collect structured feedback from students undertaking placements
- Integrate employer and student feedback into programme review processes
- Monitor placement experiences within healthcare and professional programmes
- Ensure student placement feedback informs quality improvement

Key Performance Indicators

- Student participation rates in placement feedback
- Employer engagement within programme review processes
- Evidence of programme adjustments based on placement feedback

7. Monitoring and Evaluation

7.1 The implementation of this strategy will be monitored through:

- Internal Student Experience Surveys
- Programme evaluation feedback
- Student representative reports
- Committee monitoring reports
- Annual quality review processes

7.2 The Student Engagement & Work Based Learning Committee will review progress annually and report to the Academic Board.

8. Equality, Diversity and Inclusion

8.1 Watney College is committed to ensuring that student engagement activities reflect the diversity of the student population and provide equal opportunities for participation.

8.2 Engagement activities will ensure inclusion of:

- Mature learners
- Part-time learners
- Students with disabilities
- Students from diverse backgrounds

8.3 The College will monitor participation levels to ensure engagement activities remain accessible and inclusive.

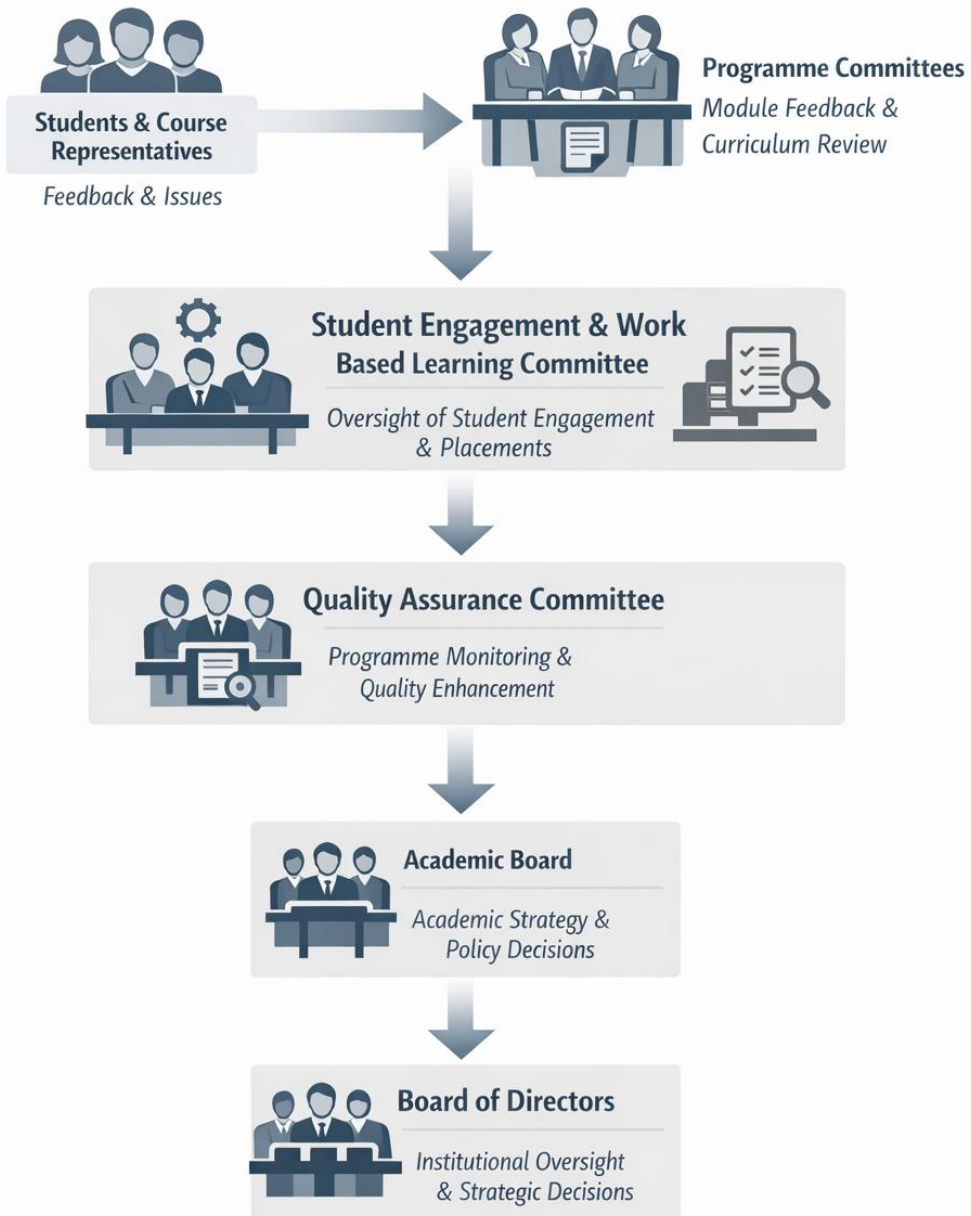
9. Review

9.1 This strategy will be reviewed annually to ensure continued alignment with:

- Watney College Business Plan
- Institutional governance structures
- Student feedback outcomes
- Regulatory expectations

9.2 Revisions will be approved by the Academic Board following review by the Student Engagement & Work Based Learning Committee.

Student Engagement Governance Structure at Watney College



Student Voice Feeding into Institutional Decision-Making